



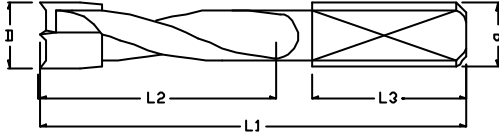
Boring Bits

**2 CUTTING EDGES
2 SPURS**

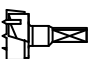
*PRAZISIONS-DUBELBOHRER
BROCAS PARA AGUJERO CIEGO*

MECHE A TOURILLONNER DE PRECISION EN CABURE

04-001



L1(mm)	L2(mm)	L3(mm)	D	d	Ref.
55.5	30.0	19.0	4.0	8.0	DD553048
55.5	30.0	19.0	5.0	8.0	DD553058
55.5	30.0	19.0	6.0	8.0	DD553068
55.5	30.0	19.0	7.0	8.0	DD553078
55.5	30.0	19.0	8.0	8.0	DD553088
55.5	30.0	19.0	10.0	8.0	DD5530108
55.5	30.0	19.0	12.0	8.0	DD5530128
57.5	27.0	27.0	4.0	10.0	DD5727410
57.5	27.0	27.0	5.0	10.0	DD5727510
57.5	27.0	27.0	5,2	10.0	DD57275210
57.5	27.0	27.0	6.0	10.0	DD5727610
57.5	27.0	27.0	1/4	10.0	DD57271/410
57.5	27.0	27.0	7.0	10.0	DD5727710
57.5	27.0	27.0	8.0	10.0	DD5727810
57.5	27.0	27.0	8,2	10.0	DD57278210
57.5	27.0	27.0	9.0	10.0	DD5727910
57.5	27.0	27.0	3/8	10.0	DD572793/810
57.5	27.0	27.0	10.0	10.0	DD57271010
57.5	27.0	27.0	11.0	10.0	DD57271110
57.5	27.0	27.0	12.0	10.0	DD57271210
57.5	27.0	27.0	1/2	10.0	DD57271/210
57.5	27.0	27.0	15.0	10.0	DD57271510
57.5	30.0	20.0	5.0	10.0	DD5730510
57.5	30.0	20.0	6.0	10.0	DD5730610
57.5	30.0	20.0	8.0	10.0	DD5730810
57.5	30.0	20.0	10.0	10.0	DD57301010
57.5	30.0	20.0	12.0	10.0	DD57301210

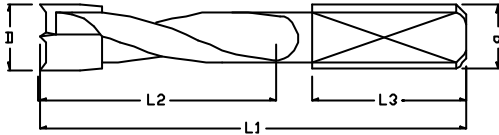


**2 CUTTING EDGES
2 SPURS**

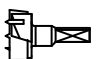
*PRAZISIONS-DUBELBOHRER
BROCAS PARA AGUJERO CIEGO*

MECHE A TOURILLONNER DE PRECISION EN CABURE

04- 002



L1(mm)	L2(mm)	L3(mm)	D	d	Ref.
67.0	40.0	19.0	4.0	8.0	DD674048
67.0	40.0	19.0	5.0	8.0	DD674058
67.0	40.0	19.0	6.0	8.0	DD674068
67.0	40.0	19.0	7.0	8.0	DD674078
67.0	40.0	19.0	8.0	8.0	DD674088
67.0	40.0	19.0	9.0	8.0	DD674098
67.0	40.0	19.0	10.0	8.0	DD6740108
67.0	40.0	19.0	12.0	8.0	DD67401028
70.0	35.0	30.0	4.0	10.0	DD7035410
70.0	35.0	30.0	5.0	10.0	DD7035510
70.0	35.0	30.0	6.0	10.0	DD7035610
70.0	35.0	30.0	1/4	10.0	DD70351/410
70.0	35.0	30.0	7.0	10.0	DD7035710
70.0	35.0	30.0	8.0	10.0	DD7035810
70.0	35.0	30.0	9.0	10.0	DD7035910
70.0	35.0	30.0	3/8	10.0	DD70353/810
70.0	35.0	30.0	10.0	10.0	DD70351010
70.0	35.0	30.0	11.0	10.0	DD70351110
70.0	35.0	30.0	12.0	10.0	DD70351210
70.0	35.0	30.0	1/2	10.0	DD70351/210
70.0	43.0	20.0	5.0	10.0	DD7043510
70.0	43.0	20.0	6.0	10.0	DD7043610
70.0	43.0	20.0	8.0	10.0	DD7043810
70.0	43.0	20.0	10.0	10.0	DD70431010
70.0	43.0	20.0	12.0	10.0	DD70431210
70.0	43.0	20.0	13.0	10.0	DD70431310
70.0	43.0	20.0	14.0	10.0	DD70431410
77.0	44.0	30.0	5.0	10.0	DD7744510
77.0	44.0	30.0	6.0	10.0	DD7744610
77.0	44.0	30.0	8.0	10.0	DD7744810
77.0	44.0	30.0	10.0	10.0	DD77441010
77.0	44.0	30.0	12.0	10.0	DD77441210

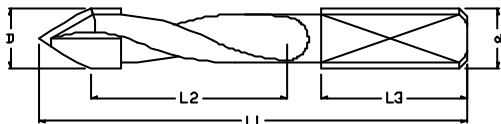


60° V-POINT

PRAZISIONS-DUBELBOHRER
BROCAS PASANTES

MECHE A TOURILLONNER DE PRECISION EN CABURE

04-003



L1(mm)	L2(mm)	L3(mm)	D	d	Ref.
55.5	25.0	20.0	5	8.0	TD552558
55.5	25.0	20.0	8	8.0	TD552588
57.5	25.0	24.0	5	10.0	TD5725510
57.5	25.0	24.0	6	10.0	TD5725610
57.5	25.0	24.0	1/4	10.0	TD57051/410
57.5	25.0	24.0	8	10.0	TD5725810
57.5	25.0	24.0	10	10.0	TD57251010
67.0	40.0	19.0	5	8.0	TD674058
67.0	40.0	19.0	8	8.0	TD674088
70.0	35.0	24.0	5	10.0	TD7035510
70.0	35.0	24.0	6	10.0	TD7035610
70.0	35.0	24.0	8	10.0	TD7035810
70.0	35.0	24.0	10	10.0	TD70351010
70.0	35.0	24.0	1/2	10.0	TD70351/210
77.0	44.0	24.0	5	10.0	TD7744510
77.0	44.0	24.0	8	10.0	TD7744810

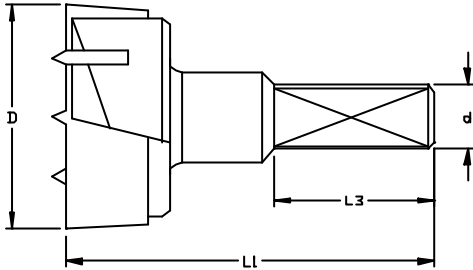


**2 END CUTTING EDGES
2 SPURS**

PRAZISIONS-ZYLINDERKOPFBOHRER
BROCAS DE PRECISION PARA HERRAJES

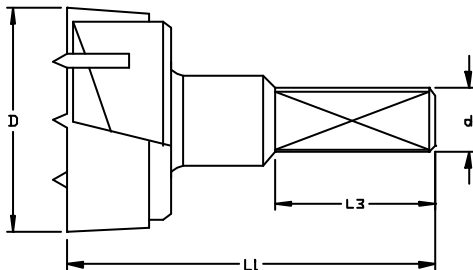
MECHE A TETE CYLINDRIQUE DE PRECISION EN CARBURE

04-004



L1(mm)	L3(mm)	D	d	Ref.
57.5	26.0	15.0	10.0	BB571510/2
57.5	26.0	16.0	10.0	BB571610/2
57.5	26.0	18.0	10.0	BB571810/2
57.5	26.0	20.0	10.0	BB572010/2
57.5	26.0	22.0	10.0	BB572210/2
57.5	26.0	25.0	10.0	BB572510/2
57.5	26.0	26.0	10.0	BB572610/2
57.5	26.0	30.0	10.0	BB573010/2
57.5	26.0	35.0	10.0	BB573510/2
57.5	26.0	40.0	10.0	BB574010/2
70.0	38.0	15.0	10.0	BB701510/2
70.0	38.0	20.0	10.0	BB702010/2
70.0	38.0	25.0	10.0	BB702510/2
70.0	38.0	26.0	10.0	BB702610/2
70.0	38.0	30.0	10.0	BB703010/2
70.0	38.0	35.0	10.0	BB703510/2

**3 END CUTTING EDGES
3 SPURS**



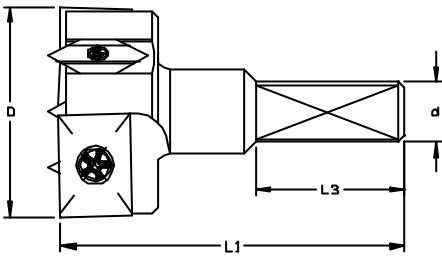
57.5	26.0	25.0	10.0	BB572510/3
57.5	26.0	26.0	10.0	BB572610/3
57.5	26.0	30.0	10.0	BB573010/3
57.5	26.0	35.0	10.0	BB573510/3
57.5	26.0	40.0	10.0	BB574010/3



PRAZISIONS- WENDEPLATTEN ZYLINDERKOPFBOHRER
BROCAS DE HERRAJES CON CUCHILLAS REVERSIBLES

MECHE A FACONNER A PLAQUETTES REVERSIBLE

04- 005



L1(mm)	L3(mm)	D	d	Ref.
57.5	25.0	25.0	10.0	BBTK572510
57.5	25.0	26.0	10.0	BBTK572610
57.5	25.0	30.0	10.0	BBTK573010
57.5	25.0	35.0	10.0	BBTK573510
57.5	25.0	40.0	10.0	BBTK574010



2 FLUTE
R/L

HARTMETALL SPIRALBOHRER
BROCA ESPIRAL EN METALDURO

04- 006



L1(mm)	L2(mm)	D	R/L	Ref.
40	16	2.0	R	TD401620R
40	16	2.0	L	TD401620L
40	18	2.5	R	TD401825R
40	18	2.5	L	TD401825L
45	18	3.0	R	TD451830R
45	18	3.0	L	TD451830L
50	18	3.18	R	TD5018318R
50	18	3.18	L	TD5018318L
50	20	3.5	R	TD502035R
50	20	3.5	L	TD502035L
50	20	4.0	R	TD502040R
50	20	4.0	L	TD502040L
50	25	5.0	R	TD502550R
50	25	5.0	L	TD502550L

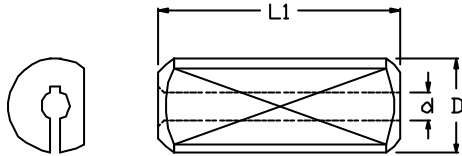


C04-A**REDUCING SLEEVE**

REDUZIERHULSEN
CASQUILLOS REDUCTORES

DOUILLE DE REDUCTION

04-007



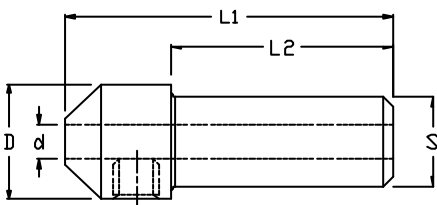
L1(mm)	D	d	Ref.
25.0	10.0	2.0	RS251020
25.0	10.0	2.5	RS251025
25.0	10.0	3.0	RS251030
25.0	10.0	3.2	RS251032
25.0	10.0	3.5	RS251035
25.0	10.0	4.0	RS251040
25.0	10.0	5.0	RS251050

C04-B**SMALL DIAMETER DRILL SLEEVE**

BOHRERHALTER
MANDRILES PARA DIAMETROS PEQUENOS

ADAPTATEUR

04-008



L1(mm)	L2(mm)	D	S	d	Ref.
40.0	25.0	15.5	10	2.0	DS2515520
40.0	25.0	15.5	10	2.5	DS2515525
40.0	25.0	15.5	10	3.0	DS2515530
40.0	25.0	15.5	10	3.2	DS2515532
40.0	25.0	15.5	10	3.5	DS2515535
40.0	25.0	15.5	10	4.0	DS2515540
40.0	25.0	15.5	10	5.0	DS2515550

