

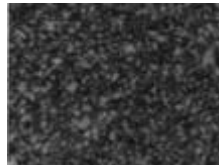


**Carbide Tips**

## CARBIDE TIP GRADES

TECHNISCHE INFORMATIONEN  
 DATOS TECNICOS  
 INFORMAZIONE TECNICHE  
 INFORMATION TECHNIQUES

02-001

*Physical Properties*

DZ05

Grade	H	TRs	Cs	D	
DZ05	1900	2300	7700	15.00	Extra fine grain size
					Excellent cutting edge
					Abrasion resistant



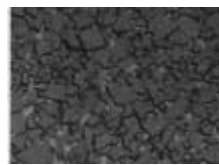
H3M

H3M	1750	1900	6900	15.20	Fine grain size
					Excellent cutting edge
					Abrasion resistant



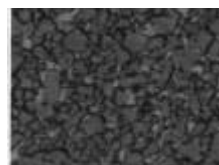
H5M

H5M	1700	2100	6700	15.00	Fine grain size
					Excellent cutting edge
					Abrasion resistant



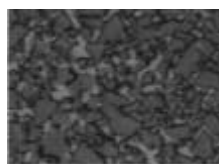
H6N

H6N	1575	2200	6200	14.95	Medium grain size
					Excellent cutting edge
					All round cutting grade



H10N

H10N	1400	2600	5200	14.60	Medium grain size
					High impact strength
					Fracture tough



H12N

H12N	1300	2800	4600	14.30	Medium grain size
					High impact strength
					Fracture tough

**H** Hardness  
**TRs** Transverse Rupture strength  
**Cs** Compressive strength  
**D** Density

## CARBIDE STRIP GRADES



H10F

H10F	1600	3750	6300	14.50	Extra fine grain size
					Superior edge quality
					Multi purpose grade



DK20

DK20	1500	2300	5300	14.75	Medium grain size
					Abrasion resistant
					High impact strength



H60N

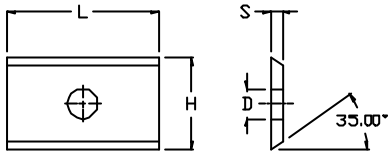
H60N	1450	2400	4900	14.65	Medium grain size
					Abrasion resistant
					High impact strength



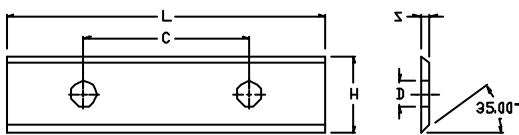
## 2 CUTTING EDGES

STANDARD WENDESCHNEIDPLATTEN -2 Schneidkanten  
 CUCHILLAS REVERSIBLES STANDARD -2 filos de corte  
 COLTELLI REVERSIBILI STANDARD -2 taglienti  
 PLAQUETTES REVERSIBLES STANDARD -2 tranchants

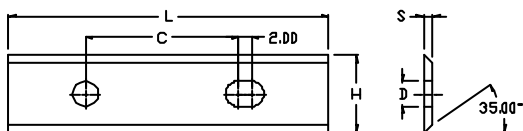
02-002



L (mm)	H (mm)	S (mm)	C	D		Ref.
7.5	12.0	1.5		4.0	H3M	PLR750EG
7.7	12.0	1.5		4.0	H3M	PLR770EG
9.6	12.0	1.5		4.0	H3M	PLR960EG
15.0	12.0	1.5		4.0	H3M	PLR015EG
20.0	12.0	1.5		4.0	H3M	PLR020EG
20.0	12.0	1.5		4.0	H3F	PLR020EG
20.0	12.0	1.5		4.0	DZ05	PLR020EG



24.7	12.0	1.5	14.0	4.0	H3M	PLR025EG
30.0	12.0	1.5	14.0	4.0	H3M	PLR030EG
30.0	12.0	1.5	14.0	4.0	H3F	PLR030EG
30.0	12.0	1.5	14.0	4.0	DZ05	PLR030EG
40.0	12.0	1.5	26.0	4.0	H3M	PLR040EG
50.0	12.0	1.5	26.0	4.0	H3M	PLR050EG
50.0	12.0	1.5	26.0	4.0	H3F	PLR050EG
50.0	12.0	1.5	26.0	4.0	DZ05	PLR050EG
60.0	12.0	1.5	26.0	4.0	H3M	PLR060EG

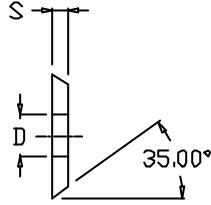
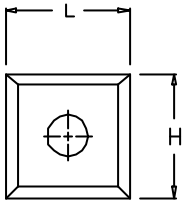


80.0	13.0	2.2	59.0	4.0	H10N	PLR080EG
100.0	13.0	2.2	59.0	4.0	H10N	PLR100EG
120.0	13.0	2.2	59.0	4.0	H10N	PLR120EG

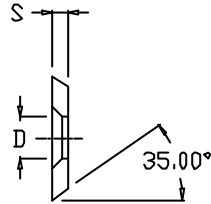
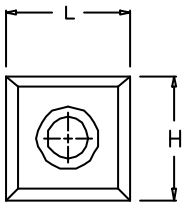


3 & 4 CUTTING EDGES

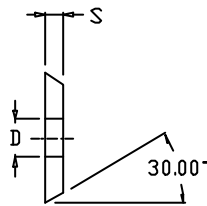
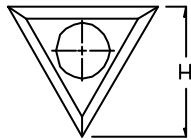
STANDARD WENDESCHNEIDPLATTEN-3 und 4Schneidkanten  
 CUCHILLAS REVERSIBLES STANDARD -3 y 4 filos de corte  
 COLTELLI REVERSIBILI STANDARD -3 e 4 taglianti  
 PLAQUETTES REVERSIBLE STANDARD -3 et 4 tranchants



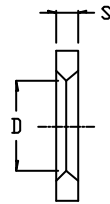
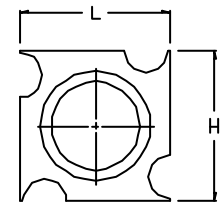
L (mm)	H (mm)	S (mm)	D	Ref.
12.0	12.0	1.5	4.0	H3M <b>PLSQ012EG</b>
12.0	12.0	1.5	4.0	H3F <b>PLSQ012EG</b>
12.0	12.0	1.5	4.0	DZ05 <b>PLSQ012EG</b>



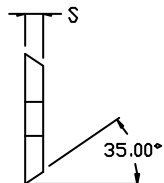
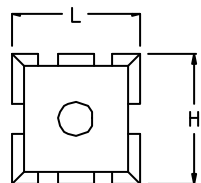
14.0	14.0	2.0	6.5	H6N <b>PLSQ142EG</b>
14.0	14.0	2.0	6.5	DZO5 <b>PLSQ142EG</b>
14.0	14.0	1.2	8.5	H6N <b>PLSQ141EG</b>



-	19.0	2.0	6.5	H6N <b>PLTR019EG</b>
---	------	-----	-----	----------------------



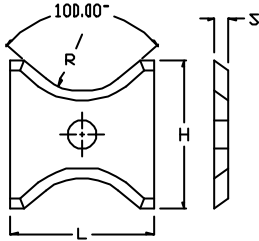
14.0	14.0	2.0	8.4	H6N <b>PLNF414EG</b>
18.0	18.0	1.95	10.3	H6N <b>PLNF418EG</b>
18.0	18.0	2.45	10.3	H6N <b>PLNF618EG</b>
18.0	18.0	2.95	-	<b>0221784</b>
18.0	18.0	3.7	-	<b>0221684</b>



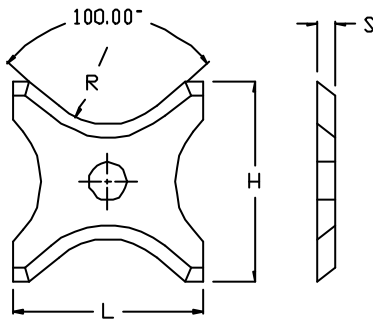
15.0	15.0	2.0	-	<b>0221914</b>
------	------	-----	---	----------------



RADIUS-WENDESCHNEIDPLATTEN  
 CUCHILLAS REVERSIBLES DE RADIO  
 COLTELLI REVERSIBILI CON RAGGIO  
 PLAQUETTES REVERSIBLE A RAYON

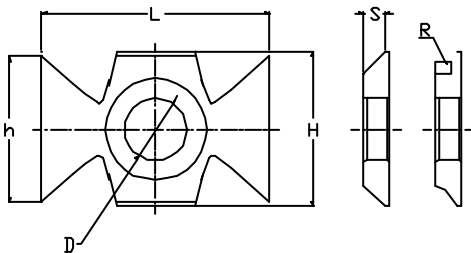


L (mm)	H (mm)	S (mm)	R (mm)	Ref.
13.0	16.0	2.0	2.0	0421025
13.0	16.0	2.0	3.0	0421035
13.0	16.0	2.0	4.0	0421045
20.0	21.0	2.0	5.0	0421055
20.0	21.0	2.0	6.0	0421065
20.0	21.0	2.0	7.0	0421075
20.0	21.0	2.0	8.0	0421085



26.0	24.0	2.0	9.0	0421095
26.0	24.0	2.0	10.0	0421105
26.0	24.0	2.0	11.0	0421115
26.0	24.0	2.0	12.0	0421125
26.0	24.0	2.0	13.0	0421135
30.0	25.0	2.0	14.0	0421145
30.0	25.0	2.0	15.0	0421155
30.0	25.0	2.0	16.0	0421165
32.0	26.0	2.0	17.0	0421175
32.0	26.0	2.0	18.0	0421185
32.0	26.0	2.0	19.0	0421195
32.0	26.0	2.0	20.0	0421205
32.0	26.0	2.0	21.0	0421215
32.0	26.0	2.0	22.0	0421225

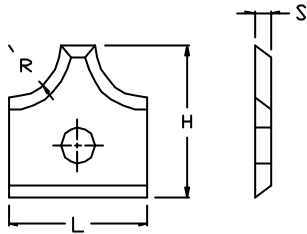
### Radius Planar Knife.



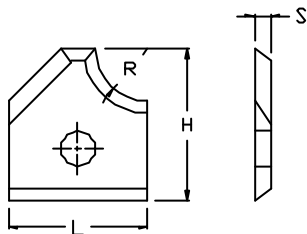
L (mm)	H (mm)	h (mm)	S (mm)	D	R	Ref.
22.0	16.0	14.9	5.0	6.5	1.0	PLBT700NR10GR
22.0	16.0	14.9	5.0	6.5	1.5	PLBT700NR15GR
22.0	16.0	14.9	5.0	6.5	2.0	PLBT700NR20GR
22.0	16.0	14.9	5.0	6.5	2.5	PLBT700NR25GR
22.0	16.0	14.9	5.0	6.5	3.0	PLBT700NR30GR
22.0	16.0	14.9	5.0	6.5	3.5	PLBT700NR35GR
22.0	16.0	14.9	5.0	6.5	4.0	PLBT700NR40GR
22.0	16.0	14.9	5.0	6.5	4.5	PLBT700NR45GR
22.0	16.0	14.9	5.0	6.5	5.0	PLBT700NR50GR
22.0	16.0	14.9	5.0	6.5	5.5	PLBT700NR45GGR



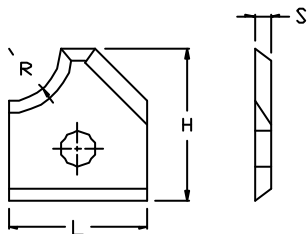
RADIUS-WENDESCHNEIDPLATTEN  
 CUCHILLAS REVERSIBLES DE RADIO  
 COLTELLI REVERSIBILI CON RAGGIO  
 PLAQUETTES REVERSIBLE A RAYON



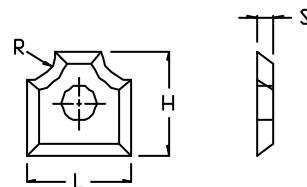
<i>HOMAG/IMA</i>				Ref.
L (mm)	H (mm)	S (mm)	R (mm)	
16.0	17.5	2.0	2.0	0423825
16.0	17.5	2.0	3.0	0423835
16.0	17.5	2.0	4.0	0423845
16.0	17.5	2.0	5.0	0423855
16.0	17.5	2.0	6.0	0423865



<i>HOMAG-right</i>				Ref.
L (mm)	H (mm)	S (mm)	R (mm)	
20.0	20.5	2.0	2.0	0424625
20.0	20.5	2.0	3.0	0424635
20.0	20.5	2.0	4.0	0424645
20.0	20.5	2.0	5.0	0424655
20.0	20.5	2.0	6.0	0424665



<i>HOMAG-left</i>				Ref.
L (mm)	H (mm)	S (mm)	R (mm)	
20.0	20.5	2.0	2.0	0424725
20.0	20.5	2.0	3.0	0424735
20.0	20.5	2.0	4.0	0424745
20.0	20.5	2.0	5.0	0424755
20.0	20.5	2.0	6.0	0424765

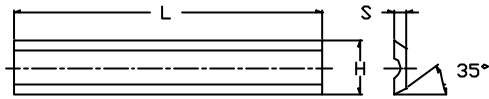


<i>HOLZ-HER</i>				Ref.
L (mm)	H (mm)	S (mm)	R (mm)	
12.0	12.0	2.0	2.0	0422525
12.0	12.0	2.0	3.0	0422535
12.0	12.0	2.0	4.0	0422545

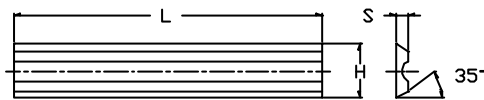


## 2/4 CUTTING EDGES

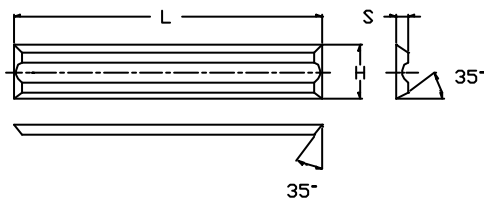
STANDARD WENDESCHNEIDPLATTEN –2/4 Schneidkanten  
 CUCHILLAS REVERSIBLES STANDARD –2/4 filos de corte  
 COLTELLI REVERSIBILI STANDARD –2/4 taglienti  
 PLAQUETTES REVERSIBLES STANDARD –2/4 tranchants



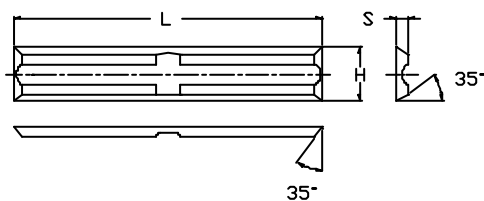
L (mm)	H (mm)	S (mm)	Ref.
12.0	5.5	1.1	PLM012EG
20.0	5.5	1.1	PLM020EG
30.0	5.5	1.1	PLM030EG
40.0	5.5	1.1	PLM040EG
50.0	5.5	1.1	PLM050EG



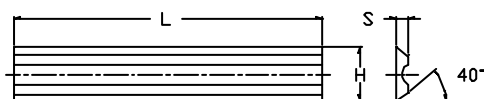
12.0	5.5	1.1	PLG012EG
20.0	5.5	1.1	PLG020EG
30.0	5.5	1.1	PLG030EG
40.0	5.5	1.1	PLG040EG
50.0	5.5	1.1	PLG050EG



20.0	5.5	1.1	PLEG020EG
30.0	5.5	1.1	PLEG030EG
40.0	5.5	1.1	PLEG040EG
50.0	5.5	1.1	PLEG050EG



20.0	5.5	1.1	PLSEG020EG
25.0	5.5	1.1	PLSEG025EG
30.0	5.5	1.1	PLSEG030EG
50.0	5.5	1.1	PLSEG050EG



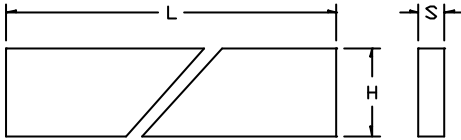
75.5	5.5	1.1	PLH755EG
75.7	5.5	1.2	PLH757EG
80.5	5.9	1.2	PLH805EG
82.0	5.5	1.1	PLH820EG
82.7	5.5	1.2	PLH827EG
92.0	5.5	1.1	PLH920EG
102.0	5.5	1.1	PLH102EG



**SQUARE EDGE**  
2 – 3 mm

HARTMETALL - STABE  
BARRAS DE CARBURO  
BARETTE CARBIDE  
BARREAUX CARBIDE

02-007



Available in 165mm (L).

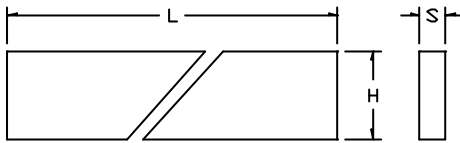
L (mm)	H (mm)	S (mm)	Size	H60N	DK20	H10F	Ref.
310.0	5.0	2.0	5 x 2	•	-	-	RWR310050020
310.0	6.0	2.0	6 x 2	•	-	-	RWR310060020
310.0	8.0	2.0	8 x 2	•	-	-	RWR310080020
310.0	10.0	2.0	10 x 2	•	-	-	RWR310100020
310.0	12.0	2.0	12 x 2	•	-	-	RWR310120020
310.0	14.0	2.0	14 x 2	•	-	-	RWR310140020
310.0	16.0	2.0	16 x 2	•	-	-	RWR310160020
310.0	18.0	2.0	18 x 2	•	-	-	RWR310180020
310.0	20.0	2.0	20 x 2	•	-	-	RWR310200020
310.0	5.0	3.0	5 x 3	•	•	•	RWR310050030
310.0	6.0	3.0	6 x 3	•	•	•	RWR310060030
310.0	8.0	3.0	8 x 3	•	•	•	RWR310080030
310.0	10.0	3.0	10 x 3	•	•	•	RWR310100030
310.0	12.0	3.0	12 x 3	•	•	•	RWR310120030
310.0	14.0	3.0	14 x 3	•	•	•	RWR310140030
310.0	16.0	3.0	16 x 3	•	•	•	RWR310160030
310.0	18.0	3.0	18 x 3	•	•	•	RWR310180030
310.0	20.0	3.0	20 x 3	•	•	•	RWR310200030
310.0	22.0	3.0	22 x 3	•	•	•	RWR310220030
310.0	25.0	3.0	25 x 3	•	•	•	RWR310250030
310.0	30.0	3.0	30 x 3	•	•	•	RWR310300030



**SQUARE EDGE**  
4 – 6 mm

HARTMETALL - STABE  
BARRAS DE CARBURO  
BARETTE CARBIDE  
BARREAUX CARBIDE

02-008



Available in 165mm (L).

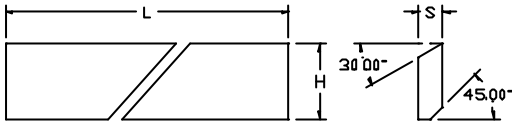
L (mm)	H (mm)	S (mm)	Size	H60N	DK20	H10F	Ref.
310.0	8.0	4.0	8 x 4	-	•	•	RWR310080040
310.0	10.0	4.0	10 x 4	-	•	•	RWR310100040
310.0	10.0	4.0	12 x 4	-	•	•	RWR310120040
310.0	14.0	4.0	14 x 4	-	•	•	RWR310140040
310.0	16.0	4.0	16 x 4	-	•	•	RWR310160040
310.0	18.0	4.0	18 x 4	-	•	•	RWR310180040
310.0	20.0	4.0	20 x 4	-	•	•	RWR310200040
310.0	22.0	4.0	22 x 4	-	•	•	RWR310220040
310.0	25.0	4.0	25 x 4	-	•	•	RWR310250040
310.0	30.0	4.0	30 x 4	-	•	•	RWR310300040
310.0	35.0	4.0	35 x 4	-	•	•	RWR310350040
310.0	40.0	4.0	40 x 4	-	•	•	RWR310400040
310.0	8.0	5.0	8 x 5	-	•	•	RWR310080050
310.0	10.0	5.0	10 x 5	-	•	•	RWR310100050
310.0	14.0	5.0	14 x 5	-	•	•	RWR310140050
310.0	16.0	5.0	16 x 5	-	•	•	RWR310160050
310.0	20.0	5.0	20 x 5	-	•	•	RWR310200050
310.0	25.0	5.0	25 x 5	-	•	•	RWR310250050
310.0	30.0	5.0	30 x 5	-	•	•	RWR310300050
310.0	16.0	6.0	16 x 6	-	•	•	RWR310160060
310.0	20.0	6.0	20 x 6	-	•	•	RWR310200060
310.0	25.0	6.0	25 x 6	-	•	•	RWR310250060
310.0	30.0	6.0	30 x 6	-	•	•	RWR310300060



**BEVEL EDGE**  
6 mm

HARTMETALL - STABE  
BARRAS DE CARBURO  
BARETTE CARBIDE  
BARREAUX CARBIDE

02-009



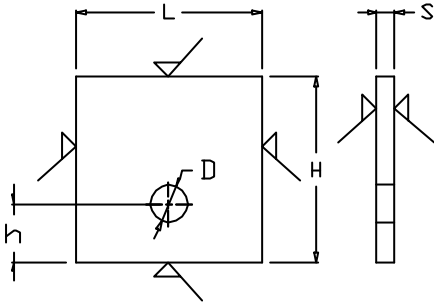
L (mm)	H (mm)	S (mm)	Size	H60N	DK20	H10F	Ref.
310.0	16.0	6.0	16 x 4	-	•	•	RWFF310160060
310.0	20.0	6.0	20 x 4	-	•	•	RWFF310200060
310.0	25.0	6.0	25 x 4	-	•	•	RWFF310250060
310.0	30.0	6.0	30 x 4	-	•	•	RWFF310300060
310.0	35.0	6.0	35 x 4	-	•	•	RWFF310350060
310.0	40.0	6.0	40 x 4	-	•	•	RWFF310400060

Available in 165mm (L).



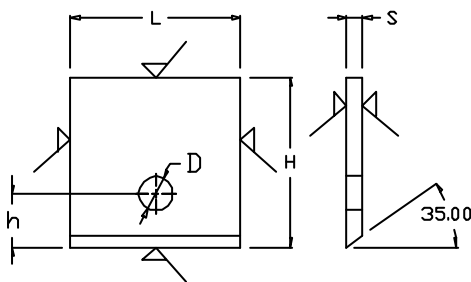
### SINGLE BOTTOM HOLE SQUARE EDGE

HARTMETALL-BLANKETTS ZUM PROFILIEREN  
PIEZAS EN BRUTO PARA PERFILAR  
COLTELLI REVERSIBILI DA PROFILARE  
PLAQUETTES REVERSIBLE POUR PROFILER



L (mm)	H (mm)	S (mm)	h	D		Ref.
20.0	20.0	2.0	6.5	4.0	H5M	PL82020202BEG
20.0	25.0	2.0	6.5	4.0	H5M	PL82020252BEG
20.0	30.0	2.0	6.5	4.0	H5M	PL82020302BEG
20.0	35.0	2.0	6.5	4.0	H5M	PL82020352BEG
25.0	20.0	2.0	6.5	4.0	H5M	PL82525202BEG
25.0	25.0	2.0	6.5	4.0	H5M	PL82525252BEG
25.0	30.0	2.0	6.5	4.0	H5M	PL82525302BEG
25.0	35.0	2.0	6.5	4.0	H5M	PL82525352BEG
30.0	20.0	2.0	6.5	4.0	H5M	PL83030202BEG
30.0	25.0	2.0	6.5	4.0	H5M	PL83030252BEG
30.0	30.0	2.0	6.5	4.0	H5M	PL83030302BEG
30.0	35.0	2.0	6.5	4.0	H5M	PL83030352BEG
35.0	20.0	2.0	6.5	4.0	H5M	PL83535202BEG
35.0	25.0	2.0	6.5	4.0	H5M	PL83535252BEG
35.0	30.0	2.0	6.5	4.0	H5M	PL83535302BEG
35.0	35.0	2.0	6.5	4.0	H5M	PL83535352BEG

### SINGLE BOTTOM HOLE BEVEL EDGE



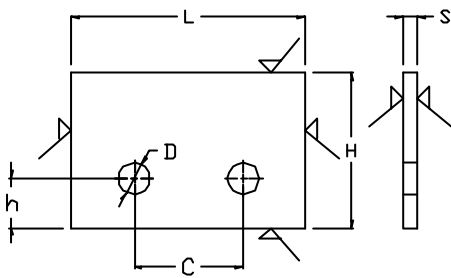
15.0	15.4	2.0	6.3	4.1	-	0319306503
15.0	20.4	2.0	6.3	4.1	-	0320206003
15.0	25.4	2.0	6.3	4.1	-	0325256003
15.8	30.4	2.0	6.3	4.1	-	0320306003
19.8	30.4	2.0	6.3	4.1	-	0320356003
20.0	20.0	2.0	6.3	4.0	H5M	PL82020202BS
20.0	25.0	2.0	6.3	4.0	H5M	PL82020252BS
20.0	30.0	2.0	6.3	4.0	H5M	PL82020302BS
20.0	35.0	2.0	6.3	4.0	H5M	PL82020352BS
25.0	20.0	2.0	6.3	4.0	H5M	PL82525202BS
25.0	25.0	2.0	6.3	4.0	H5M	PL82525252BS
25.0	30.0	2.0	6.3	4.0	H5M	PL82525302BS
25.0	35.0	2.0	6.3	4.0	H5M	PL82525352BS
30.0	20.0	2.0	6.3	4.0	H5M	PL83030202BS
30.0	25.0	2.0	6.3	4.0	H5M	PL83030252BS
30.0	30.0	2.0	6.3	4.0	H5M	PL83030302BS
30.0	35.0	2.0	6.3	4.0	H5M	PL83030352BS
35.0	20.0	2.0	6.3	4.0	H5M	PL83535202BS
35.0	25.0	2.0	6.3	4.0	H5M	PL83535252BS
35.0	30.0	2.0	6.3	4.0	H5M	PL83535302BS
35.0	35.0	2.0	6.3	4.0	H5M	PL83535352BS



**DOUBLE BOTTOM HOLE  
SQUARE EDGE**

HARTMETALL-BLANKETTS ZUM PROFILIEREN  
PIEZAS EN BRUTO PARA PERFILAR  
COLTELLI REVERSIBILI DA PROFILARE  
PLAQUETTES REVERSIBLE POUR PROFILER

02-011



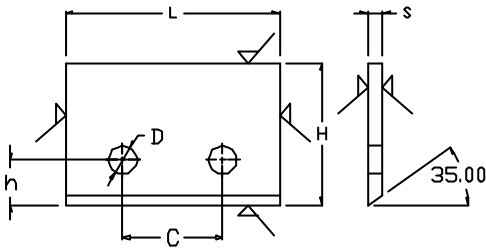
L (mm)	H (mm)	S (mm)	C	h	D		Ref.
30.0	20.0	2.0	14.0	6.5	4.0	H5M	PL83030202T
30.0	25.0	2.0	14.0	6.5	4.0	H5M	PL83030252T
30.0	30.0	2.0	14.0	6.5	4.0	H5M	PL83030302T
30.0	35.0	2.0	14.0	6.5	4.0	H5M	PL83030352T
35.0	25.0	2.0	14.0	6.5	4.0	H5M	PL83535252T
35.0	30.0	2.0	14.0	6.5	4.0	H5M	PL83535302T
35.0	35.0	2.0	14.0	6.5	4.0	H5M	PL83535352T
35.0	40.0	2.0	14.0	6.5	4.0	H5M	PL83535402T
40.0	20.0	2.0	26.0	6.5	4.0	H5M	PL84040202T
40.0	25.0	2.0	26.0	6.5	4.0	H5M	PL84040252T
40.0	30.0	2.0	26.0	6.5	4.0	H5M	PL84040302T
40.0	35.0	2.0	26.0	6.5	4.0	H5M	PL84040352T
40.0	40.0	2.0	26.0	6.5	4.0	H5M	PL84040402T
50.0	20.0	2.0	26.0	6.5	4.0	H5M	PL85050202T
50.0	25.0	2.0	26.0	6.5	4.0	H5M	PL85050252T
50.0	30.0	2.0	26.0	6.5	4.0	H5M	PL85050302T
50.0	35.0	2.0	26.0	6.5	4.0	H5M	PL85050352T
50.0	40.0	2.0	26.0	6.5	4.0	H5M	PL85050402T
50.0	45.0	2.0	26.0	6.5	4.0	H5M	PL85050452T
60.0	30.0	2.0	26.0	6.5	4.0	H5M	PL86060302T
60.0	35.0	2.0	26.0	6.5	4.0	H5M	PL86060352T
60.0	40.0	2.0	26.0	6.5	4.0	H5M	PL86060402T
60.0	45.0	2.0	26.0	6.5	4.0	H5M	PL86060452T
80.0	30.0	2.0	60.0	6.5	4/5	H5M	PL88080302T
80.0	35.0	2.0	60.0	6.5	4/5	H5M	PL88080352T
80.0	40.0	2.0	60.0	6.5	4/5	H5M	PL88080402T



**DOUBLE BOTTOM HOLE  
BEVEL EDGE**

HARTMETALL-BLANKETTS ZUM PROFILIEREN  
PIEZAS EN BRUTO PARA PERFILAR  
COLTELLI REVERSIBILI DA PROFILARE  
PLAQUETTES REVERSIBLE POUR PROFILER

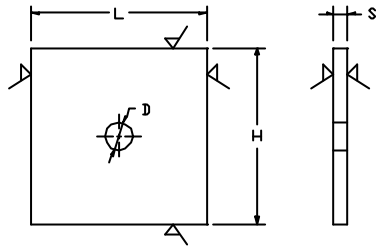
02-012



L (mm)	H (mm)	S (mm)	C	h	D		Ref.
30.0	20.0	2.0	14.0	6.3	4.0	H5M	PL83030202TS
30.0	25.0	2.0	14.0	6.3	4.0	H5M	PL83030252TS
30.0	30.0	2.0	14.0	6.3	4.0	H5M	PL83030302TS
30.0	35.0	2.0	14.0	6.3	4.0	H5M	PL83030352TS
35.0	25.0	2.0	14.0	6.3	4.0	H5M	PL83535252TS
35.0	30.0	2.0	14.0	6.3	4.0	H5M	PL83535302TS
35.0	35.0	2.0	14.0	6.3	4.0	H5M	PL83535352TS
35.0	40.0	2.0	14.0	6.3	4.0	H5M	PL83535402TS
40.0	20.0	2.0	26.0	6.3	4.0	H5M	PL84040202TS
40.0	25.0	2.0	26.0	6.3	4.0	H5M	PL84040252TS
40.0	30.0	2.0	26.0	6.3	4.0	H5M	PL84040302TS
40.0	35.0	2.0	26.0	6.3	4.0	H5M	PL84040352TS
40.0	40.0	2.0	26.0	6.3	4.0	H5M	PL84040402TS
50.0	20.0	2.0	26.0	6.3	4.0	H5M	PL85050202TS
50.0	25.0	2.0	26.0	6.3	4.0	H5M	PL85050252TS
50.0	30.0	2.0	26.0	6.3	4.0	H5M	PL85050302TS
50.0	35.0	2.0	26.0	6.3	4.0	H5M	PL85050352TS
50.0	40.0	2.0	26.0	6.3	4.0	H5M	PL85050402TS
50.0	45.0	2.0	26.0	6.3	4.0	H5M	PL85050452TS
60.0	30.0	2.0	26.0	6.3	4.0	H5M	PL86060302TS
60.0	35.0	2.0	26.0	6.3	4.0	H5M	PL86060352TS
60.0	40.0	2.0	26.0	6.3	4.0	H5M	PL86060402TS
60.0	45.0	2.0	26.0	6.3	4.0	H5M	PL86060452TS
80.0	30.0	2.0	60.0	6.3	4/5	H5M	PL88080302TS
80.0	35.0	2	60.0	6.3	4/5	H5M	PL88080352TS
80.0	40.0	2.0	60.0	6.3	4/5	H5M	PL88080402TS



### SINGLE CENTER HOLE SQUARE EDGE

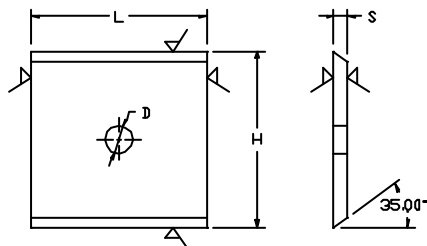


HARTMETALL-BLANKETTS ZUM PROFILIEREN  
PIEZAS EN BRUTO PARA PERFILAR  
COLTELLI REVERSIBILI DA PROFILARE  
PLAQUETTES REVERSIBLE POUR PROFILER

02-013

L (mm)	H (mm)	S (mm)	D	Ref.
15.0	15.0	2.0	4.1	0315151006
15.0	20.0	2.0	4.1	0315201006
20.0	20.0	2.0	4.1	0320201006
20.0	25.0	2.0	4.1	0320251006
20.0	30.0	2.0	4.1	0320301006
25.0	20.0	2.0	4.1	0325201006
25.0	25.0	2.0	4.1	0325251006
25.0	30.0	2.0	4.1	0325301006
30.0	20.0	2.0	4.1	0330201006
30.0	25.0	2.0	4.1	0330251006
30.0	30.0	2.0	4.1	0330301006
35.0	30.0	2.0	4.1	0335301006
35.0	35.0	2.0	4.1	0335351006

### SINGLE CENTER HOLE BEVEL EDGE



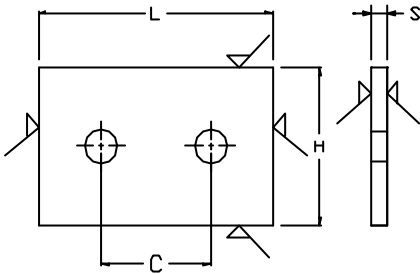
15.0	15.0	2.0	4.1	0315151103
20.0	20.0	2.0	4.1	0320201003
20.0	24.0	2.0	3.5	0320241003
25.0	16.0	2.0	4.1	0325161003
25.0	25.0	2.0	4.1	0325251003
30.0	20.0	2.0	4.1	0330201003
30.0	25.0	2.0	4.1	0330251003
30.0	26.0	2.0	4.1	0330261003
40.0	20.0	2.0	4.1	0340201003
40.0	25.0	2.0	4.1	0340251003
40.0	30.0	2.0	3.5	0340301003



**DOUBLE CENTER HOLE  
SQUARE EDGE**

HARTMETALL-BLANKETTS ZUM PROFILIEREN  
PIEZAS EN BRUTO PARA PERFILAR  
COLTELLI REVERSIBILI DA PROFILARE  
PLAQUETTES REVERSIBLE POUR PROFILER

02-014



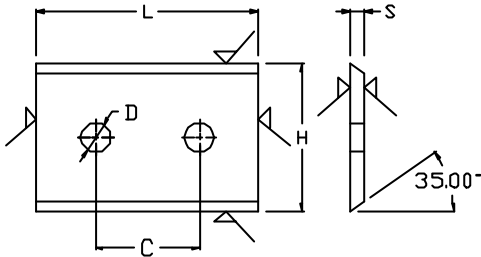
L (mm)	H (mm)	S (mm)	C	D	Ref.
30.0	25.0	2.0	14.0	4.1	0330252006
30.0	30.0	2.0	14.0	4.1	0330302006
30.0	35.0	2.0	14.0	4.1	0330352006
30.0	40.0	2.0	14.0	4.1	0330402006
40.0	30.0	2.0	26.0	4.1	0340302016
40.0	32.0	2.0	26.0	4.1	0340321006
40.0	40.0	2.0	26.0	4.1	0340402006
42.0	25.0	2.0	26.0	4.1	0342252006
42.0	32.0	2.0	26.0	4.1	0342322006
42.0	40.0	2.0	26.0	4.1	0342402006
42.0	42.0	2.0	26.0	4.1	0342422006
50.0	30.0	2.0	26.0	4.1	0350302006
50.0	35.0	2.0	26.0	4.1	0350352006
50.0	40.0	2.0	26.0	4.1	0350402006
50.0	50.0	2.0	34.0	4.1	0350502006
60.0	30.0	2.0	26.0	4.1	0360302006
60.0	40.0	2.0	26.0	4.1	0360402006
60.0	50.0	2.0	26.0	4.1	0360502006
80.0	40.0	2.0	26.0	4.1	0380402006
100.0	50.0	2.0	26.0	4.1	03100502006



**DOUBLE CENTER HOLE  
BEVEL EDGE**

HARTMETALL-BLANKETTS ZUM PROFILIEREN  
PIEZAS EN BRUTO PARA PERFILAR  
COLTELLI REVERSIBILI DA PROFILARE  
PLAQUETTES REVERSIBLE POUR PROFILER

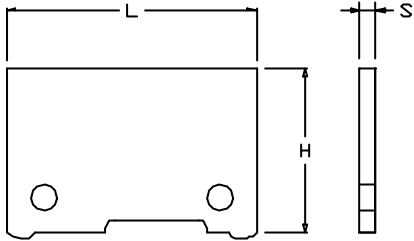
02-015



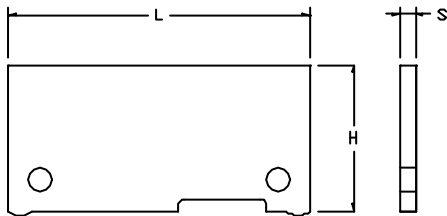
L (mm)	H (mm)	S (mm)	C	D	Ref.
30.0	25.0	2.0	20.0	3.5	0330252006
30.0	26.0	2.0	20.0	3.5	0330262003
30.0	35.0	2.0	20.0	4.1	0330352003
40.0	16.0	2.0	26.0	4.1	0340162003
40.0	20.0	2.0	20.0	4.1	0340202003
40.0	25.0	2.0	20.0	4.1	0340252103
40.0	25.0	2.0	26.0	4.1	0340252203
40.0	30.0	2.0	20.0	3.5	0340302003
40.0	32.62	2.0	20.0	3.5	0340322003
40.0	35.0	2.0	26.0	4.1	0340352103
40.0	42.86	2.0	20.0	3.5	0340422003
50.0	16.0	2.0	26.0	4.1	0350162003
50.0	25.0	2.0	26.0	4.1	0350252003
50.0	30.0	2.0	26.0	4.1	0350302003
50.0	45.0	2.0	34.0	4.1	0350452003
60.0	20.0	2.0	26.0	4.1	0360202003
60.0	25.0	2.0	26.0	4.1	0360252003
60.0	32.62	2.0	20.0	3.5	0360322003
60.0	35.0	2.0	26.0	4.1	0360352003
60.0	35.0	2.0	44.0	4.1	0360352103
60.0	40.0	2.0	44.0	4.1	0360402003
60.0	42.86	2.0	20.0	3.5	0360422003
80.0	45.0	2.0	60.0	4.1	0380452023



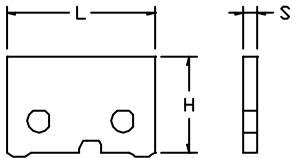
BLANKETT SUPERPROFILER  
 PIEZAS EN BRUTO SUPERPROFILER  
 COLTELLI SUPERPROFILER  
 PLAQUETTES SUPERPROFILER



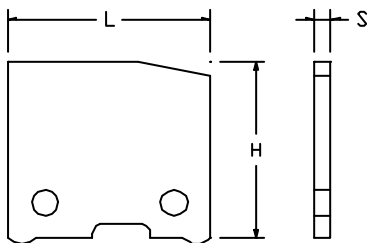
L (mm)	H (mm)	S (mm)		Ref.
41.0	28.0	1.5	05	<b>0341287001</b>
41.0	28.0	1.5	01M	<b>0341287011</b>
41.0	28.0	1.5	050M	<b>0341287051</b>
41.0	28.0	1.5	050MM	<b>0341287051M</b>
41.0	28.0	1.5	LIT	<b>0341287081</b>



51.0	35.0	1.5	05	<b>0351357001</b>
61.0	31.0	1.5	05	<b>0361317001</b>
61.0	31.0	1.5	050M	<b>0361317051</b>
61.0	45.0	2.0	05	<b>0361457001</b>
81.0	45.0	2.0	05	<b>0381457001</b>



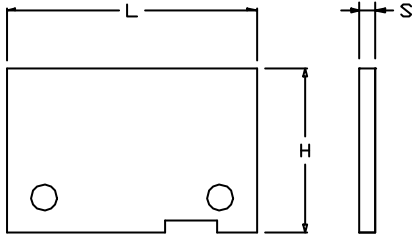
31.0	26.0	1.5	05	<b>0331267001</b>
------	------	-----	----	-------------------



51.0	45.0	2.0	05	<b>0350457001</b>
------	------	-----	----	-------------------



STUTZPLATTEN FÜR BLANKETTS SUPERPROFILER  
 PLACAS DE SOPORTE PARA PIEZAS SUPERPROFILER  
 SUPPORTI PER COLTELLI SUPERPROFILER  
 SUPPORTS POUR PLAQUETTES SUPERPROFILER

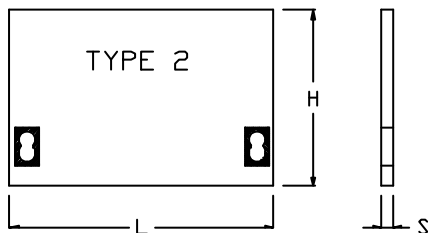
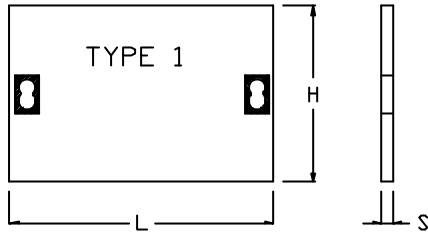


L (mm)	H (mm)	S (mm)		Ref.
40.0	26.0	4.0	41 x 28 x 1.5	<b>034128700A</b>
50.0	33.0	4.0	51 x 35 x 1.5	<b>035135700A</b>
60.0	28.0	4.0	61 x 31 x 1.5	<b>036131700A</b>
60.0	43.0	6.0	61 x 45 x 2.0	<b>036145700A</b>
80.0	43.0	6.0	81 x 45 x 2.0	<b>038145700A</b>



40mm (H)

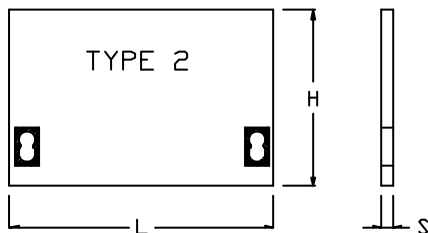
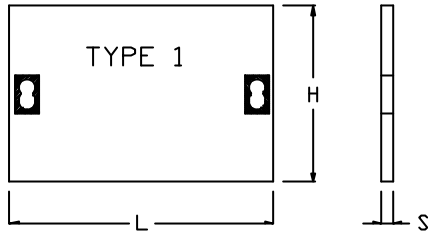
HARTMETALL-BLANKETTS ZUM STRATOSPLUS  
 PIEZAS EN BRUTO PARA STRATOSPLUS  
 COLTELLI REVERSIBILI DA STRATOSPLUS  
 PLAQUETTES REVERSIBLE POUR STRATOSPLUS



L (mm)	H (mm)	S (mm)	TYPE	Ref.
40	40	2.5	1	05 0940401
40	40	2.5	2	05 0940402
40	40	2.5	1	050M 09404015
40	40	2.5	2	050M 09404025
40	40	2.5	1	LIT 09404018
40	40	2.5	2	LIT 09404028
60	40	2.5	1	05 0960401
60	40	2.5	2	05 0960402
60	40	2.5	1	050M 09604015
60	40	2.5	2	050M 09604025
60	40	2.5	1	LIT 09604018
60	40	2.5	2	LIT 09604028
80	40	2.5	1	05 0980401
80	40	2.5	2	05 0980402
80	40	2.5	1	050M 09804015
80	40	2.5	2	050M 09804025
80	40	2.5	1	LIT 09804018
80	40	2.5	2	LIT 09804028
100	40	2.5	1	05 09100401
100	40	2.5	2	05 09100402
100	40	2.5	1	050M 091004015
100	40	2.5	2	050M 091004025
100	40	2.5	1	LIT 091004018
100	40	2.5	2	LIT 091004028
120	40	2.5	1	05 09120401
120	40	2.5	2	05 09120402
120	40	2.5	1	050M 091204015
120	40	2.5	2	050M 091204025
120	40	2.5	1	LIT 091204018
120	40	2.5	2	LIT 091204028
130	40	2.5	1	05 09130401
130	40	2.5	2	05 09130402
130	40	2.5	1	050M 091304015
130	40	2.5	2	050M 091304025
130	40	2.5	1	LIT 091304018
130	40	2.5	2	LIT 091304028
150	40	2.5	1	05 09150401
150	40	2.5	2	05 09150402
150	40	2.5	1	050M 091504015
150	40	2.5	2	050M 091504025
150	40	2.5	1	LIT 091504018
150	40	2.5	2	LIT 091504028



50mm (H)



HARTMETALL-BLANKETTS ZUM STRATOSPLUS  
 PIEZAS EN BRUTO PARA STRATOSPLUS  
 COLTELLI REVERSIBILI DA STRATOSPLUS  
 PLAQUETTES REVERSIBLE POUR STRATOSPLUS

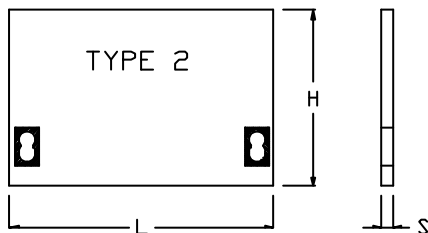
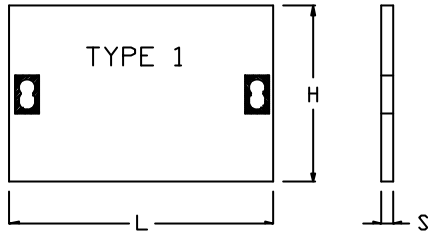
02-019

L (mm)	H (mm)	S (mm)	TYPE	Ref.
40	50	2.5	1	05 0940501
40	50	2.5	2	05 0940502
40	50	2.5	1	050M 09405015
40	50	2.5	2	050M 09405025
40	50	2.5	1	LIT 09405018
40	50	2.5	2	LIT 09405028
60	50	2.5	1	05 0960501
60	50	2.5	2	05 0960502
60	50	2.5	1	050M 09605015
60	50	2.5	2	050M 09605025
60	50	2.5	1	LIT 09605018
60	50	2.5	2	LIT 09605028
80	50	2.5	1	05 0980501
80	50	2.5	2	05 0980502
80	50	2.5	1	050M 09805015
80	50	2.5	2	050M 09805025
80	50	2.5	1	LIT 09805018
80	50	2.5	2	LIT 09805028
100	50	2.5	1	05 09100501
100	50	2.5	2	05 09100502
100	50	2.5	1	050M 091005015
100	50	2.5	2	050M 091005025
100	50	2.5	1	LIT 091005018
100	50	2.5	2	LIT 091005028
120	50	2.5	1	05 09120501
120	50	2.5	2	05 09120502
120	50	2.5	1	050M 091205015
120	50	2.5	2	050M 091205025
120	50	2.5	1	LIT 091205018
120	50	2.5	2	LIT 091205028
130	50	2.5	1	05 09130501
130	50	2.5	2	05 09130502
130	50	2.5	1	050M 091305015
130	50	2.5	2	050M 091305025
130	50	2.5	1	LIT 091305018
130	50	2.5	2	LIT 091305028
150	50	2.5	1	05 09150501
150	50	2.5	2	05 09150502
150	50	2.5	1	050M 091505015
150	50	2.5	2	050M 091505025
150	50	2.5	1	LIT 091505018
150	50	2.5	2	LIT 091505028



60mm (H)

HARTMETALL-BLANKETTS ZUM STRATOSPLUS  
 PIEZAS EN BRUTO PARA STRATOSPLUS  
 COLTELLI REVERSIBILI DA STRATOSPLUS  
 PLAQUETTES REVERSIBLE POUR STRATOSPLUS



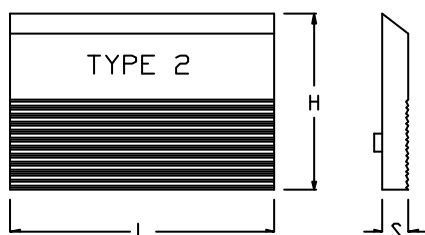
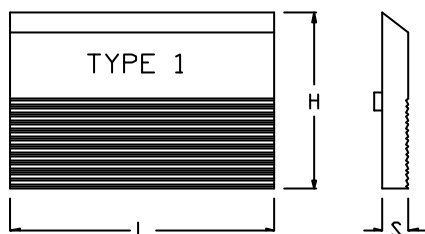
L (mm)	H (mm)	S (mm)	TYPE	Ref.
40	60	2.5	1	05 0940601
40	60	2.5	2	05 0940602
40	60	2.5	1	050M 09406015
40	60	2.5	2	050M 09406025
40	60	2.5	1	LIT 09406018
40	60	2.5	2	LIT 09406028
60	60	2.5	1	05 0960601
60	60	2.5	2	05 0960602
60	60	2.5	1	050M 09606015
60	60	2.5	2	050M 09606025
60	60	2.5	1	LIT 09606018
60	60	2.5	2	LIT 09606028
80	60	2.5	1	05 0980601
80	60	2.5	2	05 0980602
80	60	2.5	1	050M 09806015
80	60	2.5	2	050M 09806025
80	60	2.5	1	LIT 09806018
80	60	2.5	2	LIT 09806028
100	60	2.5	1	05 09100601
100	60	2.5	2	05 09100602
100	60	2.5	1	050M 091006015
100	60	2.5	2	050M 091006025
100	60	2.5	1	LIT 091006018
100	60	2.5	2	LIT 091006028
120	60	2.5	1	05 09120601
120	60	2.5	2	05 09120602
120	60	2.5	1	050M 091206015
120	60	2.5	2	050M 091206025
120	60	2.5	1	LIT 091206018
120	60	2.5	2	LIT 091206028
130	60	2.5	1	05 09130601
130	60	2.5	2	05 09130602
130	60	2.5	1	050M 091306015
130	60	2.5	2	050M 091306025
130	60	2.5	1	LIT 091306018
130	60	2.5	2	LIT 091306028
150	60	2.5	1	05 09150601
150	60	2.5	2	05 09150602
150	60	2.5	1	050M 091506015
150	60	2.5	2	050M 091506025
150	60	2.5	1	LIT 091506018
150	60	2.5	2	LIT 091506028



40/50/60mm

STUTZPLATTEN FÜR STRATOSPLUS  
 PLACES DE SOUTÈNE PARA STRATOSPLUS  
 SUPPORTI PER STRATOSPLUS  
 SUPPORTS POUR STRATOSPLUS

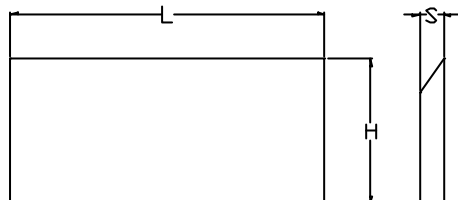
02-021



L (mm)	H (mm)	S (mm)	TYPE	Ref.
40	40	6.1	1	0940401S
40	40	6.1	2	0940402S
60	40	6.1	1	0960401S
60	40	6.1	2	0960402S
80	40	6.1	1	0980401S
80	40	6.1	2	0980402S
100	40	6.1	1	09100401S
100	40	6.1	2	09100402S
120	40	6.1	1	09120401S
120	40	6.1	2	09120402S
130	40	6.1	1	09130401S
130	40	6.1	2	09130402S
150	40	6.1	1	09150401S
150	40	6.1	2	09150402S
<hr/>				
40	50	6.1	1	0940501S
40	50	6.1	2	0940502S
60	50	6.1	1	0960501S
60	50	6.1	2	0960502S
80	50	6.1	1	0980501S
80	50	6.1	2	0980502S
100	50	6.1	1	09100501S
100	50	6.1	2	09100502S
120	50	6.1	1	09120501S
120	50	6.1	2	09120502S
130	50	6.1	1	09130501S
130	50	6.1	2	09130502S
150	50	6.1	1	09150501S
150	50	6.1	2	09150502S
<hr/>				
40	60	6.1	1	0940501S
40	60	6.1	2	0940502S
60	60	6.1	1	0960501S
60	60	6.1	2	0960502S
80	60	6.1	1	0980501S
80	60	6.1	2	0980502S
100	60	6.1	1	09100501S
100	60	6.1	2	09100502S
120	60	6.1	1	09120501S
120	60	6.1	2	09120502S
130	60	6.1	1	09130501S
130	60	6.1	2	09130502S
150	60	6.1	1	09150501S
150	60	6.1	2	09150502S



PLAIN BACK - FULL BAR  
M2



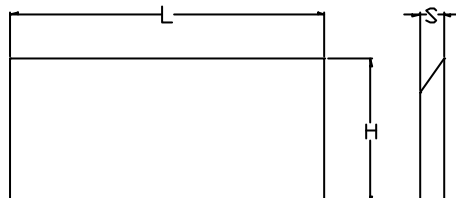
*Square edged.  
Special angles available.*

**METRIC**

L (mm)	H (mm)	S (mm)		Ref.
650	25.0	3.0	M2	409122100
650	30.0	3.0	M2	409121101A
650	35.0	3.0	M2	409122103A
650	38.0	3.0	M2	409122104A
650	30.0	4.0	M2	409122106
650	35.0	4.0	M2	409122108
650	40.0	4.0	M2	409122109A
650	45.0	4.0	M2	409122110
650	20.0	6.0	M2	409122112
650	35.0	6.0	M2	409122113
650	40.0	6.0	M2	409122115
650	50.0	6.0	M2	409122118
650	60.0	6.0	M2	409122121
650	40.0	8.0	M2	409122124
650	50.0	8.0	M2	409122126
650	60.0	8.0	M2	409122128
1000	25.0	3.0	M2	409122101
1000	30.0	3.0	M2	409122102
1000	35.0	3.0	M2	409122104
1000	38.0	3.0	M2	409122105
1000	30.0	4.0	M2	409122107
1000	35.0	4.0	M2	409122108A



PLAIN BACK - FULL BAR  
T1



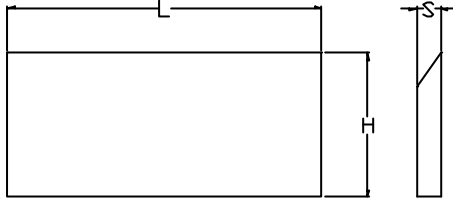
*Square edged.  
Special angles available.*

**METRIC**

L (mm)	H (mm)	S (mm)	Ref.
650	20.0	3.0	T1 409121080
650	25.0	3.0	T1 409121095
650	30.0	3.0	T1 409121101
650	35.0	3.0	T1 409121102
650	38.0	3.0	T1 409121103
650	30.0	4.0	T1 409121105
650	35.0	4.0	T1 409121108
650	40.0	4.0	T1 409121109
650	35.0	6.0	T1 409121114
650	40.0	6.0	T1 409121115
650	50.0	6.0	T1 409121118
650	50.0	8.0	T1 409121126
650	60.0	8.0	T1 409121128
1000	20.0	3.0	T1 409121190
1000	25.0	3.0	T1 409121100
1000	30.0	3.0	T1 409121102
1000	35.0	3.0	T1 409121103
1000	38.0	3.0	T1 409121105
1000	30.0	4.0	T1 409121106
1000	40.0	4.0	T1 409121113



PLAIN BACK - FULL BAR  
M2



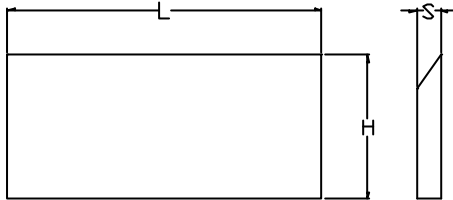
*Square edged.  
Special angles available.*

**IMPERIAL**

L (in)	H (in)	S (in)		Ref.
30 1/4	1 3/4	5/32	M2	409113510
30 1/4	2	5/32	M2	409113509
36	5/8	1/8	M2	409112500
36	3/4	1/8	M2	409112501
36	1	1/8	M2	409112504
36	1 1/8	1/8	M2	409112505
36	1 1/4	1/8	M2	409112506
36	1 3/8	1/8	M2	409112507
36	1 1/2	1/8	M2	409112508
36	1 1/8	5/32	M2	409113500
36	1 1/4	5/32	M2	409113501
36	1 3/8	5/32	M2	409113502
36	1 1/2	5/32	M2	409113503
36	2	5/32	M2	409113506
36	2 1/4	5/32	M2	409113507
36	1 1/4	3/16	M2	409114500
36	1 1/2	3/16	M2	409114501
36	1 3/4	3/16	M2	409114502
36	2	3/16	M2	409114503
36	2 1/2	3/16	M2	409114505



PLAIN BACK  
M2



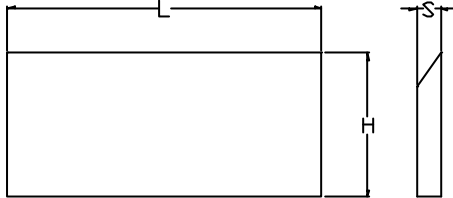
*Balanced in pairs.*

**METRIC**

L (mm)	H (mm)	S (mm)		Ref.
50	30.0	3.0	M2	409144207
60	30.0	3.0	M2	409144209
80	30.0	3.0	M2	409144213
100	30.0	3.0	M2	409144215
130	30.0	3.0	M2	409144218
150	30.0	3.0	M2	409144220
180	30.0	3.0	M2	409144223
190	30.0	3.0	M2	409144224
230	30.0	3.0	M2	409144230
235	30.0	3.0	M2	409144231
240	30.0	3.0	M2	409144232
310	30.0	3.0	M2	409142240
320	30.0	3.0	M2	409144242
510	30.0	3.0	M2	409144248
50	35.0	3.0	M2	409144407
60	35.0	3.0	M2	409144409
80	35.0	3.0	M2	409144413
100	35.0	3.0	M2	409144415
130	35.0	3.0	M2	409144418
150	35.0	3.0	M2	409144420
180	35.0	3.0	M2	409144423
190	35.0	3.0	M2	409144424
230	35.0	3.0	M2	409144430
235	35.0	3.0	M2	409144431
240	35.0	3.0	M2	409144432
310	35.0	3.0	M2	409144440
320	35.0	3.0	M2	409144442
510	35.0	3.0	M2	409144448



PLAIN BACK  
T1



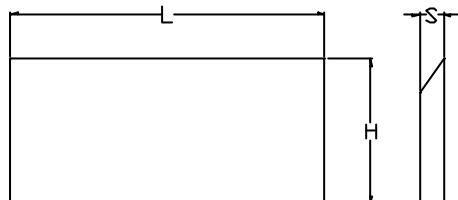
*Balanced in pairs.*

**METRIC**

L (mm)	H (mm)	S (mm)	Ref.
50	30.0	3.0	T1 409141207
60	30.0	3.0	T1 409141209
80	30.0	3.0	T1 409141213
100	30.0	3.0	T1 409141215
130	30.0	3.0	T1 409141218
150	30.0	3.0	T1 409141220
180	30.0	3.0	T1 409141223
190	30.0	3.0	T1 409141224
230	30.0	3.0	T1 409141230
235	30.0	3.0	T1 409141231
240	30.0	3.0	T1 409141232
310	30.0	3.0	T1 409141240
320	30.0	3.0	T1 409141242
510	30.0	3.0	T1 409141248
50	35.0	3.0	T1 409141407
60	35.0	3.0	T1 409141409
80	35.0	3.0	T1 409141413
100	35.0	3.0	T1 409141415
130	35.0	3.0	T1 409141418
150	35.0	3.0	T1 409141420
180	35.0	3.0	T1 409141423
190	35.0	3.0	T1 409141424
230	35.0	3.0	T1 409141430
235	35.0	3.0	T1 409141431
240	35.0	3.0	T1 409141432
310	35.0	3.0	T1 409141440
320	35.0	3.0	T1 409141442
510	35.0	3.0	T1 409141448



**PLAIN BACK  
M2 & T1**



*Balanced in pairs.*

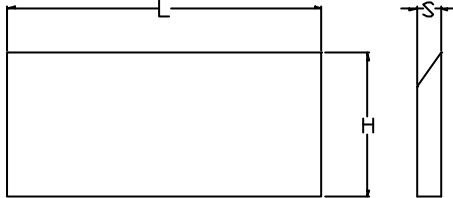
**METRIC**

L (mm)	H (mm)	S (mm)		Ref.
50	30.0	4.0	M2	409144307
60	30.0	4.0	M2	409144309
80	30.0	4.0	M2	409144313
100	30.0	4.0	M2	409144315
130	30.0	4.0	M2	409144318
150	30.0	4.0	M2	409144320
180	30.0	4.0	M2	409144323
190	30.0	4.0	M2	409144324
230	30.0	4.0	M2	409144330
235	30.0	4.0	M2	409144331
240	30.0	4.0	M2	409144332
310	30.0	4.0	M2	409144340
320	30.0	4.0	M2	409144342
510	30.0	4.0	M2	409144348

50	30.0	4.0	T1	409141307
60	30.0	4.0	T1	409141309
80	30.0	4.0	T1	409141313
100	30.0	4.0	T1	409141315
130	30.0	4.0	T1	409141318
150	30.0	4.0	T1	409141320
180	30.0	4.0	T1	409141323
190	30.0	4.0	T1	409141324
230	30.0	4.0	T1	409144330
235	30.0	4.0	T1	409141331
240	30.0	4.0	T1	409141332
310	30.0	4.0	T1	409141340
320	30.0	4.0	T1	409141342
510	30.0	4.0	T1	409141348



**PLAIN BACK  
M2**



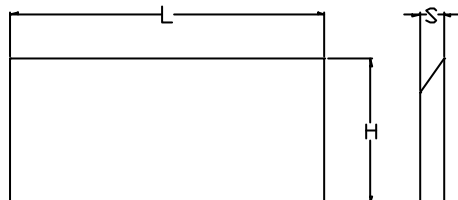
*Balanced in pairs.*

**IMPERIAL**

L (in)	H (in)	S (in)		Ref.
6 1/4	1	1/8	M2	409143121
9 1/4	1	1/8	M2	409143131
10 1/4	1	1/8	M2	409143136
12 1/4	1	1/8	M2	409143141
16 1/4	1	1/8	M2	409143145
18 1/4	1	1/8	M2	409143146
20 1/4	1	1/8	M2	409143149
24 1/4	1	1/8	M2	409143152
6 1/4	1 1/4	1/8	M2	409143221
9 1/4	1 1/4	1/8	M2	409143231
10 1/4	1 1/4	1/8	M2	409143236
12 1/4	1 1/4	1/8	M2	409143241
16 1/4	1 1/4	1/8	M2	409143245
18 1/4	1 1/4	1/8	M2	409143246
20 1/4	1 1/4	1/8	M2	409143249
24 1/4	1 1/4	1/8	M2	409143252
6 1/4	1 1/2	5/32	M2	409143621
9 1/4	1 1/2	5/32	M2	409143631
10 1/4	1 1/2	5/32	M2	409143636
12 1/4	1 1/2	5/32	M2	409143641
16 1/4	1 1/2	5/32	M2	409143645
18 1/4	1 1/2	5/32	M2	409143646
20 1/4	1 1/2	5/32	M2	409143649
24 1/4	1 1/2	5/32	M2	409143652



**PLAIN BACK  
M2 & T1**



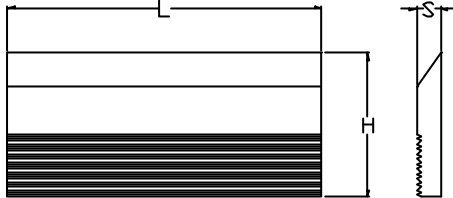
*Balanced in pairs.*

**IMPERIAL**

L (mm)	H (mm)	S (mm)		Ref.
650	30.0	4.0	M2	409122206
650	35.0	4.0	M2	409122208
650	40.0	4.0	M2	409122209
650	35.0	6.0	M2	409122214
650	40.0	6.0	M2	409122215
650	50.0	6.0	M2	409122218
650	40.0	8.0	M2	409122224
650	45.0	8.0	M2	409122225
650	50.0	8.0	M2	409122226
650	60.0	8.0	M2	409122228
650	65.0	8.0	M2	409122229
650	70.0	8.0	M2	409122230
1000	30.0	4.0	M2	409122207
650	30.0	4.0	T1	409121206
650	35.0	4.0	T1	409121208
650	40.0	4.0	T1	409121209
650	30.0	6.0	T1	409121213
650	35.0	6.0	T1	409121214
650	40.0	6.0	T1	409121215
650	40.0	8.0	T1	409121224
650	50.0	8.0	T1	409121226
650	60.0	8.0	T1	409121228
650	70.0	8.0	T1	409121230
1000	30.0	4.0	T1	409121207
1000	35.0	4.0	T1	409121208A



60° SERRATIONS  
M2 & T1



Available with square edges.

IMPERIAL

L (in)	H (in)	S (in)		Ref.
25	1 1/4	1/4	M2	409111509
25	1 1/2	1/4	M2	409111510
25	1 3/4	1/4	M2	409111511
25	2	1/4	M2	409111512
25	2 1/4	1/4	M2	409111513

25	1 1/2	1/4	T1	409116500
25	1 3/4	1/4	T1	409116501
25	2	1/4	T1	409116502
25	2 1/4	1/4	T1	409116503

25	2 1/2	1/4	M2	409111514
25	1 1/4	5/16	M2	409111502
25	1 1/2	5/16	M2	409111500
25	1 3/4	5/16	M2	409111501
25	2	5/16	M2	409111503
25	2 1/4	5/16	M2	409111505
25	2 1/2	5/16	M2	409111506
25	2 3/4	5/16	M2	409111507
25	3	5/16	M2	409111508
30 1/4	1 3/4	3/16	M2	409119908
30 1/4	2	3/16	M2	409119907

25	2 1/2	1/4	T1	409116504
25	1 1/2	5/16	T1	409116508
25	1 3/4	5/16	T1	409116509
25	2	5/16	T1	409116507
25	2 1/4	5/16	T1	409116506
25	2 1/2	5/16	T1	409116505



**M2**  
**60° SERRATIONS**

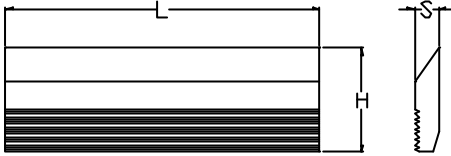


*Balanced in pairs.*

L (mm) H (mm) S (mm)			Ref.	
20	30.0	4.0	M2	409145301
25	30.0	4.0	M2	409145302
30	30.0	4.0	M2	409145303
40	30.0	4.0	M2	409145305
50	30.0	4.0	M2	409145307
60	30.0	4.0	M2	409145309
70	30.0	4.0	M2	409145311
80	30.0	4.0	M2	409145313
<hr/>				
100	30.0	4.0	M2	409145315
130	30.0	4.0	M2	409145318
150	30.0	4.0	M2	409145320
180	30.0	4.0	M2	409145323
230	30.0	4.0	M2	409145330
235	30.0	4.0	M2	409145331
<hr/>				
20	35.0	4.0	M2	409145501
25	35.0	4.0	M2	409145502
30	35.0	4.0	M2	409145503
40	35.0	4.0	M2	409145505
50	35.0	4.0	M2	409145507
60	35.0	4.0	M2	409145509
70	35.0	4.0	M2	409145511
80	35.0	4.0	M2	409145513
<hr/>				
100	35.0	4.0	M2	409145515
130	35.0	4.0	M2	409145518
150	35.0	4.0	M2	409145520
180	35.0	4.0	M2	409145523
230	35.0	4.0	M2	409145530



T1  
60° SERRATIONS



*Balanced in pairs.*

L (mm)	H (mm)	S (mm)	Ref.	
20	30.0	4.0	T1	409142301
25	30.0	4.0	T1	409142302
30	30.0	4.0	T1	409142303
40	30.0	4.0	T1	409142305
50	30.0	4.0	T1	409142307
60	30.0	4.0	T1	409142309
70	30.0	4.0	T1	409142311
80	30.0	4.0	T1	409142313
100	30.0	4.0	T1	409142315
130	30.0	4.0	T1	409142318
150	30.0	4.0	T1	409142320
180	30.0	4.0	T1	409142323
230	30.0	4.0	T1	409142330
235	30.0	4.0	T1	409142331
20	35.0	4.0	T1	409142501
25	35.0	4.0	T1	409142502
30	35.0	4.0	T1	409142503
40	35.0	4.0	T1	409142505
50	35.0	4.0	T1	409142507
60	35.0	4.0	T1	409142509
70	35.0	4.0	T1	409142511
80	35.0	4.0	T1	409142513
100	35.0	4.0	T1	409142515
130	35.0	4.0	T1	409142518
150	35.0	4.0	T1	409142520
180	35.0	4.0	T1	409142523
230	35.0	4.0	T1	409142530
235	35.0	4.0	T1	409142531



**M2**  
**60° SERRATIONS**



*Balanced in pairs.*

L (mm)	H (mm)	S (mm)		Ref.
20	40.0	8.0	M2	409165301
25	40.0	8.0	M2	409165302
30	40.0	8.0	M2	409165303
40	40.0	8.0	M2	409165305
50	40.0	8.0	M2	409165307
60	40.0	8.0	M2	409165309
70	40.0	8.0	M2	
80	40.0	8.0	M2	409165313
100	40.0	8.0	M2	409165315
130	40.0	8.0	M2	409165318
150	40.0	8.0	M2	409165320
180	40.0	8.0	M2	409165323
230	40.0	8.0	M2	409165330
235	40.0	8.0	M2	409165331
20	50.0	8.0	M2	409165501
25	50.0	8.0	M2	409165502
30	50.0	8.0	M2	409165503
40	50.0	8.0	M2	409165505
50	50.0	8.0	M2	409165507
60	50.0	8.0	M2	409165509
70	50.0	8.0	M2	409165511
80	50.0	8.0	M2	409165513
100	50.0	8.0	M2	409165515
130	50.0	8.0	M2	409165518
150	50.0	8.0	M2	409165520
180	50.0	8.0	M2	409165523
230	50.0	8.0	M2	409165530



T1  
60° SERRATIONS



*Balanced in pairs.*

L (mm)	H (mm)	S (mm)	Ref.	
20	40.0	8.0	T1	409162301
25	40.0	8.0	T1	409162302
30	40.0	8.0	T1	409162303
40	40.0	8.0	T1	409162305
50	40.0	8.0	T1	409162307
60	40.0	8.0	T1	409162309
80	40.0	8.0	T1	409162313
100	40.0	8.0	T1	409162315
130	40.0	8.0	T1	409162318
150	40.0	8.0	T1	409162320
180	40.0	8.0	T1	409162323
230	40.0	8.0	T1	409162330
235	40.0	8.0	T1	409162331
20	50.0	8.0	T1	409162501
25	50.0	8.0	T1	409162502
30	50.0	8.0	T1	409162503
40	50.0	8.0	T1	409162505
50	50.0	8.0	T1	409162507
60	50.0	8.0	T1	409162509
70	50.0	8.0	T1	409162511
80	50.0	8.0	T1	409162513
100	50.0	8.0	T1	409162515
130	50.0	8.0	T1	409162518
150	50.0	8.0	T1	409162520
180	50.0	8.0	T1	409162523
230	50.0	8.0	T1	409162530



**M2**  
**60° SERRATIONS**



*Balanced in pairs.*

L (mm) H (mm) S (mm)			Ref.	
20	60.0	8.0	M2	409165801
25	60.0	8.0	M2	409165802
30	60.0	8.0	M2	409165803
40	60.0	8.0	M2	409165805
50	60.0	8.0	M2	409165807
60	60.0	8.0	M2	409165809
70	60.0	8.0	M2	409165811
80	60.0	8.0	M2	409165813
<hr/>				
100	60.0	8.0	M2	409165815
130	60.0	8.0	M2	409165818
150	60.0	8.0	M2	409165820
180	60.0	8.0	M2	409165823
230	60.0	8.0	M2	409165830
<hr/>				
20	70.0	8.0	M2	409165901
25	70.0	8.0	M2	409165902
30	70.0	8.0	M2	409165903
40	70.0	8.0	M2	409165905
50	70.0	8.0	M2	409165907
60	70.0	8.0	M2	409165909
70	70.0	8.0	M2	409165911
80	70.0	8.0	M2	409165913
<hr/>				
100	70.0	8.0	M2	409165915
130	70.0	8.0	M2	409165918
150	70.0	8.0	M2	409165920
180	70.0	8.0	M2	409165923
230	70.0	8.0	M2	409165930



T1  
60° SERRATIONS

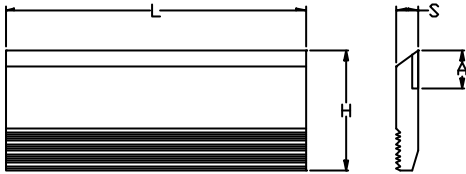


*Balanced in pairs.*

L (mm) H (mm) S (mm)			Ref.	
20	60.0	8.0	T1	409162801
25	60.0	8.0	T1	409162802
30	60.0	8.0	T1	409162803
40	60.0	8.0	T1	409162305
50	60.0	8.0	T1	409162807
60	60.0	8.0	T1	409162809
70	60.0	8.0	T1	409162811
80	60.0	8.0	T1	409162813
<hr/>				
100	60.0	8.0	T1	409162815
130	60.0	8.0	T1	409162818
150	60.0	8.0	T1	409162820
180	60.0	8.0	T1	409162823
230	60.0	8.0	T1	409162830
<hr/>				
20	70.0	8.0	T1	409162901
25	70.0	8.0	T1	409162902
30	70.0	8.0	T1	409162903
40	70.0	8.0	T1	409162905
50	70.0	8.0	T1	409162907
60	70.0	8.0	T1	409162909
70	70.0	8.0	T1	409162911
80	70.0	8.0	T1	409162913
<hr/>				
100	70.0	8.0	T1	409162915
130	70.0	8.0	T1	409162918
150	70.0	8.0	T1	409162920
180	70.0	8.0	T1	409162923
230	70.0	8.0	T1	409162930



**PLAIN BACK  
TUNGSTEN CARBIDE TIPPED**



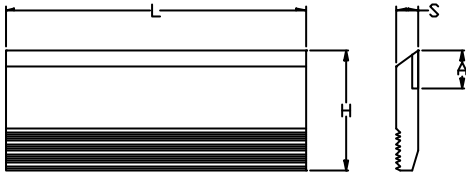
*Balanced in pairs.*

**METRIC**

L (mm)	H (mm)	S (mm)	A (mm)	Ref.
60	30.0	3.0	11.0	429111209
80	30.0	3.0	11.0	429111213
100	30.0	3.0	11.0	429111215
110	30.0	3.0	11.0	429111216
120	30.0	3.0	11.0	429111217
130	30.0	3.0	11.0	429111218
150	30.0	3.0	11.0	429111220
180	30.0	3.0	11.0	429111223
210	30.0	3.0	11.0	429111225
230	30.0	3.0	11.0	429111230
260	30.0	3.0	11.0	429111234
310	30.0	3.0	11.0	429111238
320	30.0	3.0	11.0	429111241
400	30.0	3.0	11.0	429111244
510	30.0	3.0	11.0	429111248
600	30.0	3.0	11.0	429111249
630	30.0	3.0	11.0	429111252
670	30.0	3.0	11.0	429111253
935	30.0	3.0	11.0	429111270
60	35.0	3.0	11.0	429113209
80	35.0	3.0	11.0	429113213
100	35.0	3.0	11.0	429113215
110	35.0	3.0	11.0	429113216
120	35.0	3.0	11.0	429113217
130	35.0	3.0	11.0	429113218
150	35.0	3.0	11.0	429113220
180	35.0	3.0	11.0	429113223
210	35.0	3.0	11.0	429113225
230	35.0	3.0	11.0	429113230
260	35.0	3.0	11.0	429113234
310	35.0	3.0	11.0	429113238
320	35.0	3.0	11.0	429113241
400	35.0	3.0	11.0	421913244
510	35.0	3.0	11.0	429113248
600	35.0	3.0	11.0	429113249
630	35.0	3.0	11.0	429113252
670	35.0	3.0	11.0	429113253
935	35.0	3.0	11.0	429113270



**PLAIN BACK  
TUNGSTEN CARBIDE TIPPED**



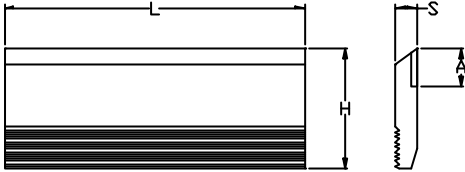
*Balanced in pairs.*

**IMPERIAL**

L (in)	H (in)	S (in)	A (mm)	Ref.
4 1/4	1 1/4	1/8	11.0	429112214
5 1/4	1 1/4	1/8	11.0	429112219
6 1/4	1 1/4	1/8	11.0	429112221
9 1/4	1 1/4	1/8	11.0	429112232
12 1/4	1 1/4	1/8	11.0	429112240
16 1/4	1 1/4	1/8	11.0	429112245
18 1/4	1 1/4	1/8	11.0	429112247
20 1/4	1 1/4	1/8	11.0	429112250
24 1/4	1 1/4	1/8	11.0	429112251
3 1/4	1 1/4	1/8	11.0	429112255
36 1/4	1 1/4	1/8	11.0	429112265
4 1/4	1 1/2	1/8	11.0	429114214
5 1/4	1 1/2	1/8	11.0	429114219
6 1/4	1 1/2	1/8	11.0	429114221
9 1/4	1 1/2	1/8	11.0	429114232
12 1/4	1 1/2	1/8	11.0	429114240
16 1/4	1 1/2	1/8	11.0	429114245
18 1/4	1 1/2	1/8	11.0	429114247
20 1/4	1 1/2	1/8	11.0	429114250
24 1/4	1 1/2	1/8	11.0	429114251
3 1/4	1 1/2	1/8	11.0	429114255
36 1/4	1 1/2	1/8	11.0	421914265
4 1/4	1 1/2	5/32	11.0	429123214
5 1/4	1 1/2	5/32	11.0	429123219
6 1/4	1 1/2	5/32	11.0	429123221
9 1/4	1 1/2	5/32	11.0	429123232
12 1/4	1 1/2	5/32	11.0	429123240
16 1/4	1 1/2	5/32	11.0	429123245
18 1/4	1 1/2	5/32	11.0	429123247
20 1/4	1 1/2	5/32	11.0	429123250
24 1/4	1 1/2	5/32	11.0	421923251
3 1/4	1 1/2	5/32	11.0	429123255
36 1/4	1 1/2	5/32	11.0	429123265



**60° SERRATED BACK  
TUNGSTEN CARBIDE TIPPED**

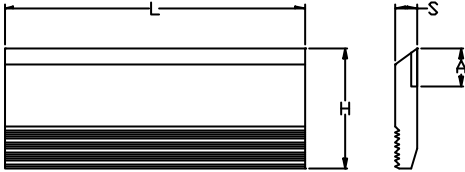


*Balanced in pairs.*

L (mm)	H (mm)	S (mm)	A (mm)	Ref.
40	30.0	4.0	11.0	42913105
50	30.0	4.0	11.0	429131207
60	30.0	4.0	11.0	429131209
70	30.0	4.0	11.0	429131211
80	30.0	4.0	11.0	429131213
100	30.0	4.0	11.0	429131215
130	30.0	4.0	11.0	429131218
150	30.0	4.0	11.0	429131220
180	30.0	4.0	11.0	429131223
230	30.0	4.0	11.0	429131230
<hr/>				
40	40.0	10.0	10.0	429142105
50	40.0	10.0	10.0	429142107
60	40.0	10.0	10.0	429142109
70	40.0	10.0	10.0	429142111
80	40.0	10.0	10.0	429142113
100	40.0	10.0	10.0	429142115
130	40.0	10.0	10.0	429142118
150	40.0	10.0	10.0	429142120
180	40.0	10.0	10.0	429142123
230	40.0	10.0	10.0	429142130
<hr/>				
40	40.0	10.0	20.0	429142505
50	40.0	10.0	20.0	429142507
60	40.0	10.0	20.0	429142509
70	40.0	10.0	20.0	429142511
80	40.0	10.0	20.0	429142513
100	40.0	10.0	20.0	429142515
130	40.0	10.0	20.0	429142518
150	40.0	10.0	20.0	429142520
180	40.0	10.0	20.0	429142523
230	40.0	10.0	20.0	429142530
<hr/>				
40	50.0	10.0	15.0	429144305
50	50.0	10.0	15.0	429144307
60	50.0	10.0	15.0	429144309
70	50.0	10.0	15.0	429144311
80	50.0	10.0	15.0	429144303
100	50.0	10.0	15.0	429144315
130	50.0	10.0	15.0	429144318
150	50.0	10.0	15.0	429144320
180	50.0	10.0	15.0	429144323
230	50.0	10.0	15.0	429144330



**60° SERRATED BACK  
TUNGSTEN CARBIDE TIPPED**

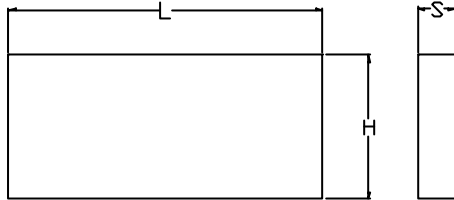


*Balanced in pairs.*

L (mm)	H (mm)	S (mm)	A (mm)	Ref.
40	50.0	10.0	25.0	429144705
50	50.0	10.0	25.0	429144707
60	50.0	10.0	25.0	429144709
70	50.0	10.0	25.0	429144711
80	50.0	10.0	25.0	429144713
100	50.0	10.0	25.0	429144715
130	50.0	10.0	25.0	429144718
150	50.0	10.0	25.0	429144720
180	50.0	10.0	25.0	429144723
230	50.0	10.0	25.0	429144730
<hr/>				
40	60.0	10.0	25.0	429146705
50	60.0	10.0	25.0	429146707
60	60.0	10.0	25.0	429146709
70	60.0	10.0	25.0	429146711
80	60.0	10.0	25.0	429146713
100	60.0	10.0	25.0	429146715
130	60.0	10.0	25.0	429146718
150	60.0	10.0	25.0	429146720
180	60.0	10.0	25.0	429146723
230	60.0	10.0	25.0	429146730
<hr/>				
40	60.0	10.0	35.0	429146905
50	60.0	10.0	35.0	429146907
60	60.0	10.0	35.0	429146909
70	60.0	10.0	35.0	429146911
80	60.0	10.0	35.0	429146913
100	60.0	10.0	35.0	429146915
130	60.0	10.0	35.0	429146918
150	60.0	10.0	35.0	429146920
180	60.0	10.0	35.0	429146923
230	60.0	10.0	35.0	429146930
<hr/>				
40	70.0	10.0	30.0	429148805
50	70.0	10.0	30.0	429148807
60	70.0	10.0	30.0	429148809
70	70.0	10.0	30.0	429148811
80	70.0	10.0	30.0	429148813
100	70.0	10.0	30.0	429148815
130	70.0	10.0	30.0	429148818
150	70.0	10.0	30.0	429148820
180	70.0	10.0	30.0	429148823
230	70.0	10.0	30.0	429148830



## WHITEHILL BLANKS

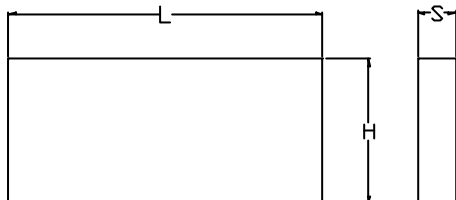


## IMPERIAL

L (in)	H (in)	S (in)	Ref.
12	1	5/32	40922146
28	1	5/32	40922150
36	1	5/32	40922170
12	1 1/4	5/32	40922246
28	1 1/4	5/32	40922250
36	1 1/4	5/32	40922270
3/4	1 1/2	5/32	40922301
1	1 1/2	5/32	40922302
1 1/4	1 1/2	5/32	40922303
1 1/2	1 1/2	5/32	40922304
1 3/4	1 1/2	5/32	40922305
2	1 1/2	5/32	40922306
2 1/4	1 1/2	5/32	40922307
2 1/2	1 1/2	5/32	40922308
2 3/4	1 1/2	5/32	40922309
3	1 1/2	5/32	40922310
4	1 1/2	5/32	40922314
12	1 1/2	5/32	40922346
18	1 1/2	5/32	40922350
25	1 1/2	5/32	40922360
36	1 1/2	5/32	40922370
12	1 3/4	5/32	40922446
18	1 3/4	5/32	40922450
36	1 3/4	5/32	40922470
2	2	5/32	40922506
3	2	5/32	40922510
12	2	5/32	40922546
18	2	5/32	40922550
36	2	5/32	40922570
12	2 1/2	5/32	40922646
18	2 1/2	5/32	40922650
36	2 1/2	5/32	40922670
2	2	3/16	40923506
12	2	3/16	40923546
18	2	3/16	40923550
36	2	3/16	40923570
12	2	1/4	40924546
18	2	1/4	40924550
36	2	1/4	40924570
12	2 1/2	1/4	40924646
18	2 1/2	1/4	40924650
36	2 1/2	1/4	40924670



## BLANKS

*METRIC*

L (mm)	H (mm)	S (mm)		Ref.
650	20.0	6.0	M2	409132110
650	25.0	6.0	M2	409132111
650	30.0	6.0	M2	409132112
650	32.0	6.0	M2	409132113
650	35.0	6.0	M2	409132114
650	40.0	6.0	M2	409132115
650	45.0	6.0	M2	409132117
650	50.0	6.0	M2	409132118

